



SERVICE LETTER

Equipment/Furnishings
Passenger Compartment

Best Practice for the Push-To-Test (PTT)
Button on Electronic Module Assembly (EMA)
P/Ns 511959, 513766 and 514518

All Aircraft Makes and Models

The information contained herein is confidential and proprietary to AmSafe. It shall not be reproduced or disclosed, in whole or in part, to persons other than those necessary for the user to utilize such information or used in any manner detrimental to AmSafe's interests or for the purpose for which such information was provided without the express, written consent of AmSafe, except to the extent required for installation or maintenance of recipient's equipment.

Freedom of Information Act (5 U.S.C. 552) and Disclosure of Confidential Information (generally 18 U.S.C. 1905). AmSafe is furnishing this document in confidence. The information disclosed herein falls within exemption (b) (4) of 5 USC 552 and the prohibitions of 18 USC 1905.

The AmSafe Commercial and Government Entity (CAGE) code: 35FB9

AmSafe Inc.
1043 N. 47th Avenue
Phoenix, Arizona 85043
Telephone: +1(602) 850-2850
Fax: +1(602) 850-2812

Customer Service:
www.amsafe.com
customerservice-new@amsafe.com
602-850-2850
800-228-1567

SL511438, Issue: 1
Page: 1 of 4
Date: 10-May-2019



SERVICE LETTER

1. Subject

This service letter provides the best practice to use when pressing the push-to-test (PTT) button (Figure 1) on electronic module assembly (EMA) P/Ns 511959, 513766 and 514518.

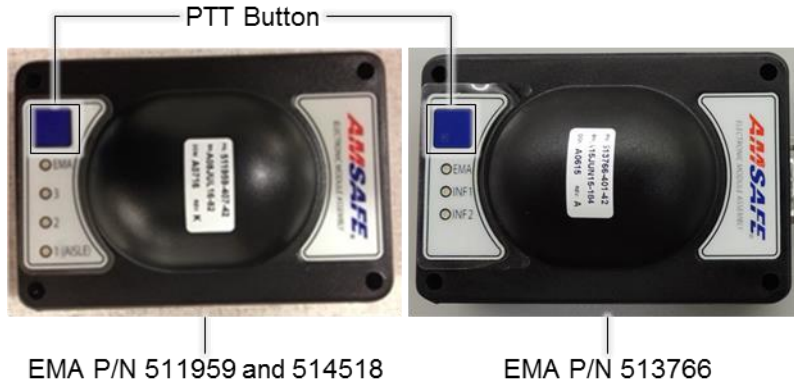


Figure 1. Representative EMAs

2. Applicability

All aircraft utilizing EMA P/Ns 511959, 513766 and 514518.

3. Discussion

The PTT button is designed to be pressed by a finger or a tool with a round, soft tip (Figure 2). Pressing the PTT button with a tool with a sharp tip (Figure 3) can damage the PTT button and can lead to performance issues, total loss of function and decreased service life.

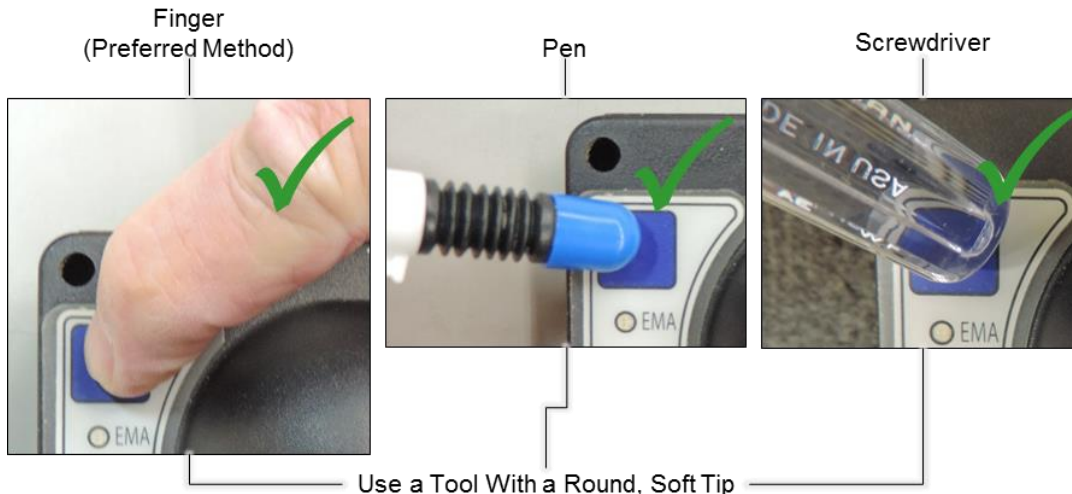


Figure 2. Examples of Tools with Round, Soft Tips



SERVICE LETTER

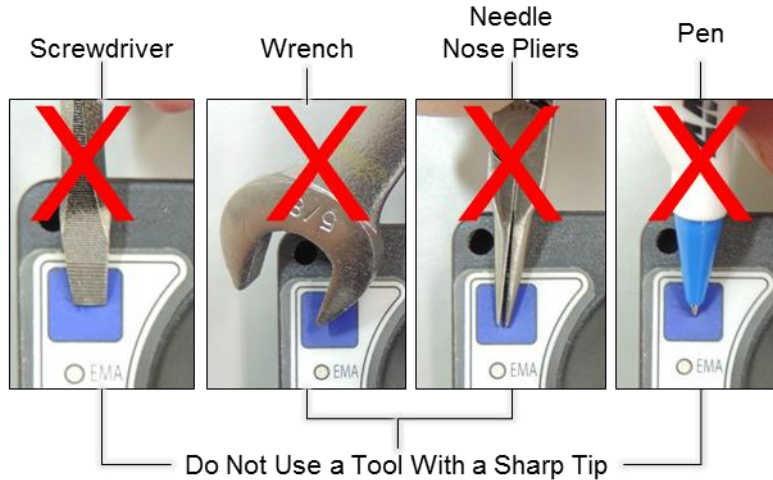


Figure 3. Examples of Tools with Sharp Tips

As a best practice, press the PTT button with your finger or a tool with a shape similar to a finger, including a relatively soft tip (Figure 2). This best practice ensures the PTT button is not damaged and eliminates problems with performance issues, loss of function and decreased service life.

4. Operator Action

Ensure that the best practice in this service letter is communicated to, and understood by, personnel who use the EMAs described in section 2.

5. Accomplishment Instructions

Not applicable.



SERVICE LETTER

Approval Signatures

Prepared By:	<u>Jeanette Buenger</u>	<u>5/14/19</u>
	Jeanette Buenger, Technical Writer	Date
Approved By:	<u>Kevin Keeelar</u>	<u>5/14/19</u>
	Kevin Keeelar, Director of Engineering, Airbags	Date
Approved By:	<u>Jack Riley</u>	<u>5/14/19</u>
	Jack Riley, Quality Manager	Date
Approved By:	<u>Daniel Londenson</u>	<u>5/13/2019</u>
	Daniel Londenson, Certification Manager	Date
Approved By:	<u>Shawn Bucher</u>	<u>5/13/19</u>
	Shawn Bucher, Director of Engineering	Date